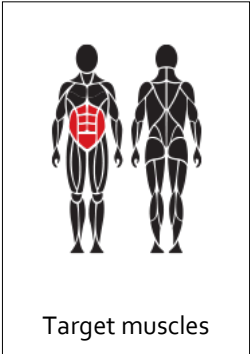


OG92 ABDOMINAL MACHINE

PRODUCT GUIDE



PRODUCT FEATURES

- Effective and safe exercise equipment
- Adjustable loading:
 - 5-75 kg (1 x weight unit)
 - 5 kg increments
- Soft leg support
- Maintenance-free
- Can be installed on a movable platform

COLOR OPTIONS

The product comes as standard in RAL Classic colors:
RAL 5012 (blue), RAL 3020 (red), RAL 6018 (green)
RAL 1017 (yellow), or RAL 7024 (grey).



Other RAL colors are available at an additional cost.

OG92 ABDOMINAL MACHINE

D I M E N S I O N S

Length	1090 mm
Width	1650 mm
Height	1520 mm
Equipment weight	167 kg (1 x weight unit)

M A T E R I A L

Metal parts	Steel
Mounting post	Stainless steel
Tube strengths	3-6 mm
Coating solution	Zink and powder coating electropolishing

C O U N T R Y / S T A N D A R D

Country of manufacture	Finland
Standard	EN16630

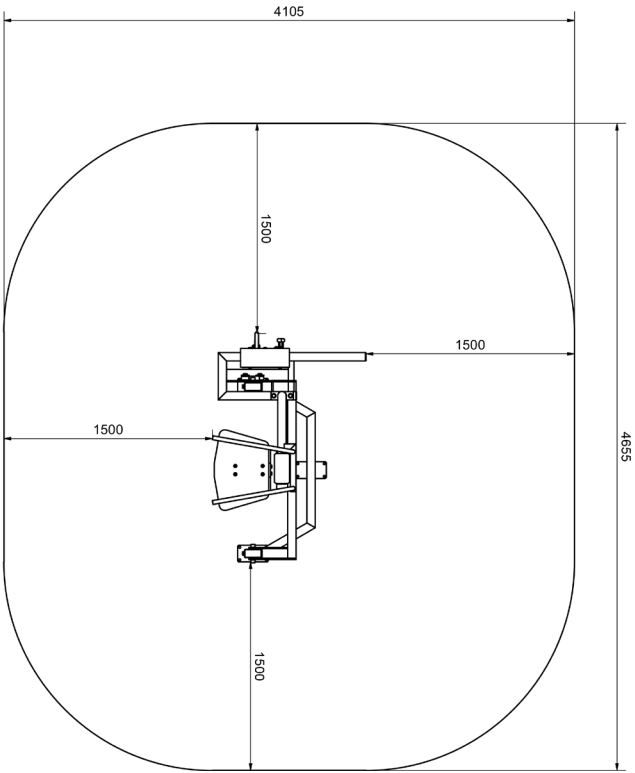
B A S E O P T I O N S

A. Concrete	Surface mounting to concrete
B. Platform	Installed on movable platform

F O U N D A T I O N

For example: artificial turf or moldable safety platform
Concrete min 120 mm below equipment
Ground frost insulation, thickness based on the ground

Instruction guide included in delivery:
installation instructions, maintenance, usage info.
Contact: info@omnigym.com



EN16630